



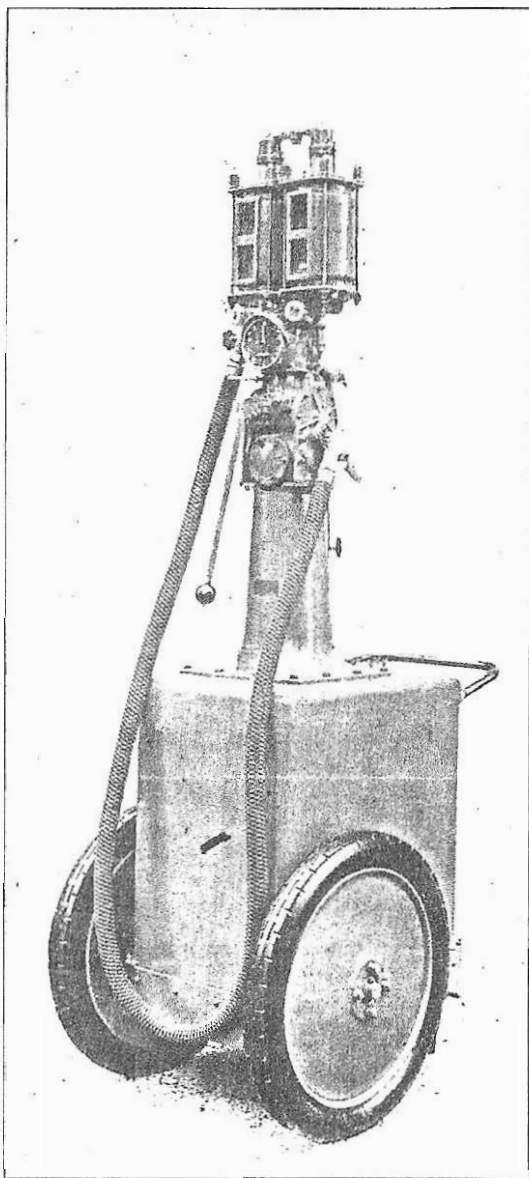
FOR OFFICIAL USE.

(435)

## WEIGHTS AND MEASURES ACT, 1904.

### NOTICE OF EXAMINATION OF PATTERN No. 435.

SUBMITTED BY MESSRS. WATTS, FINCHAM & Co., LTD.,  
SOUTHFIELD ROAD, ACTON GREEN, LONDON, W.4



The Board of Trade have examined and tested, with reference to the material of which and the principle on which it is constructed, a pattern of a liquid measuring and delivering apparatus of 1 gallon capacity of the form shown herein, which has been submitted to the Department under the provisions of Section 6 of the above Act, and have issued a Certificate No. 326 dated 30th June, 1927, that the pattern is not such as to facilitate the perpetration of fraud when used for the measurement of petrol and other liquids of low viscosity.

Board of Trade,  
Standards Department,  
6, Old Palace Yard,  
Westminster, S.W.1.  
March, 1928.

This pattern consists of the twin container type of liquid measuring apparatus described in Notice No. 433, Certificate No. 316, but mounted on a portable tank as illustrated herein.

The measuring unit is identical with that described in Notice No. 433, except that the suction pipe from the supply tank to the hand operated pump is fitted, near to the pump, with a readily detachable sleeve shown at A, fig. I. The delivery pipe from the pump to the container, is fitted with a bye-pass pipe leading back to the container, shown at B and C. A valve D is fitted to control this bye-pass. The object of this arrangement is to enable the supply tank to be filled from a barrel or other convenient source, utilising for this purpose the hand operated pump normally used to deliver liquid to the measuring unit.

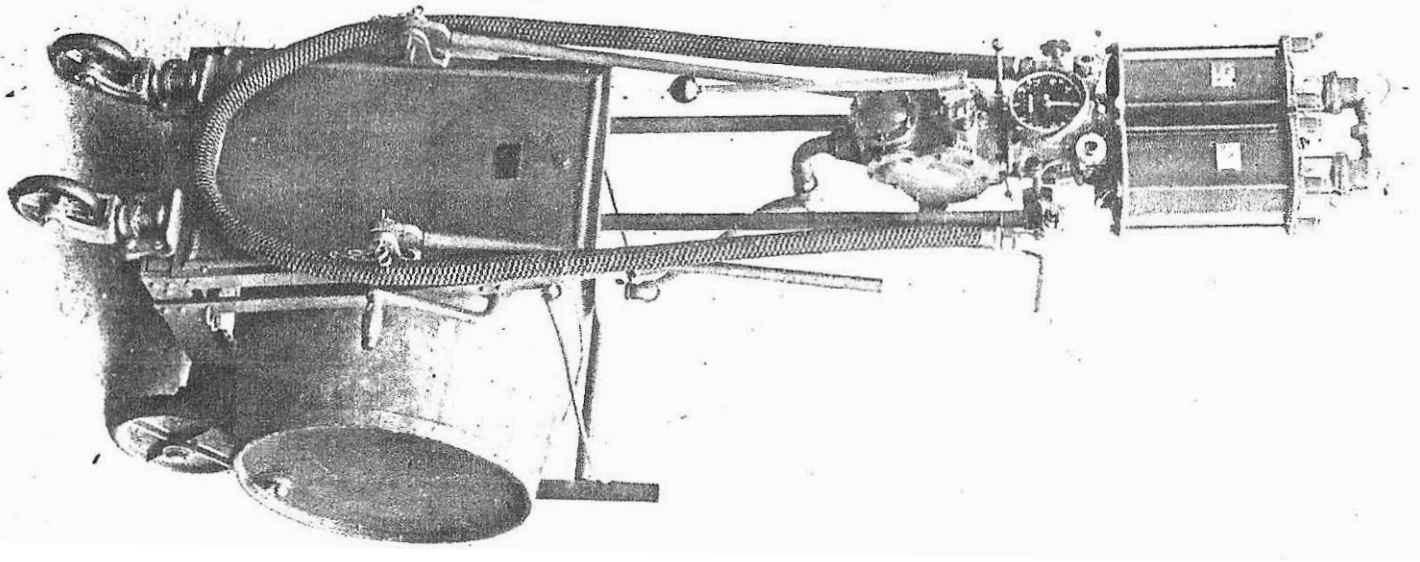
Fig. II shows the apparatus set for filling the supply tank. It will be noticed that the sleeve A has been replaced by a blanking-off tube E (fig. II) adapted to receive a flexible pipe at its outer extremity. This constitutes the suction pipe. The valve D is opened and the hand pump operated to fill the portable tank.

The Inspector should note that an additional sealing place is required in this apparatus, to protect the non-return valve F. The method of sealing is illustrated, but for clearness the sealing wire is not shown in the tightened position.

*Notes for the guidance of Inspectors.*

As at present advised the Board would raise no objection to the acceptance for verification and stamping of instruments only differing from the pattern described in the following particulars:—

- (a) the apparatus mounted on a barrel-holding stand as shown in fig. III. In this arrangement there is no bye-pass and alternative suction pipe. The sealing is, therefore, identical with that of Notice No. 433.
- (b) having metal containers, denominated by a brass strip sweated to the body of each container, as depicted in fig. III.



LONDON:

PRINTED AND PUBLISHED BY HIS MAJESTY'S STATIONERY OFFICE.  
To be purchased directly from H.M. STATIONERY OFFICE at the following addresses:  
Adastral House, Kingsway, London, W.C.2; 120, George Street, Edinburgh;  
York Street, Manchester; 1, St. Andrew's Crescent, Cardiff;  
15, Donegall Square West, Belfast;  
or through any Bookseller.

1928

Price 5d. net.

(858--27) Wt. 18070-11971209 750 528 H. St. G. 879